

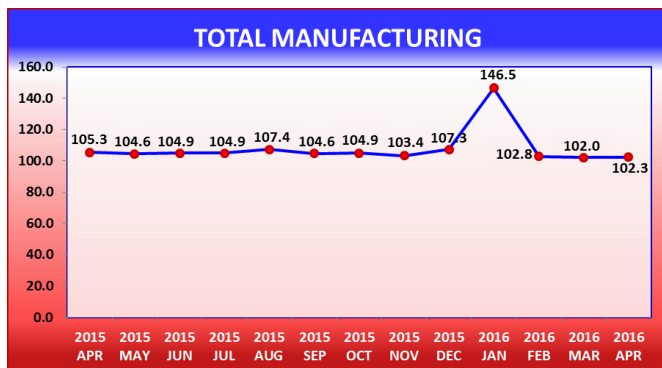
# PRODUCER PRICE INDEX (MANUFACTURING)

## APRIL 2016

The **Producer Price Index**<sup>1</sup> (PPI) measures the average change over time in the prices of goods and services produced by businesses as they leave the producer (i.e. Manufacturer). PPIs can be used to provide better deflators for national accounts and estimating Gross Domestic Product (GDP). The measurement is related to a fixed period, which is referred to as the base-period. The base-period is May 2011 and can be expressed as May 2011 =100. The indicators are obtained from a selected number of establishments, representative of each industry group. The source of the data for the Index is the monthly *Survey of Producer Prices*.

### Performance of the Producer Price Index

The **Producer Price Index (Manufacturing)** for April 2016 recorded a small increase of **0.3%** when compared to March 2016.



Increases recorded in the indices for Printing and Reproduction of Recorded Media (**2.5%**); Beverages (**2.2%**) and Other Manufacturing (**1.2%**) were the contributors to the increase. Over the same period declines were recorded in the indices for Fabricated Metal Products, except Machinery and Equipment (**1.0%**); Petroleum and Chemical Products (**0.6%**); Food Products (**0.1%**).

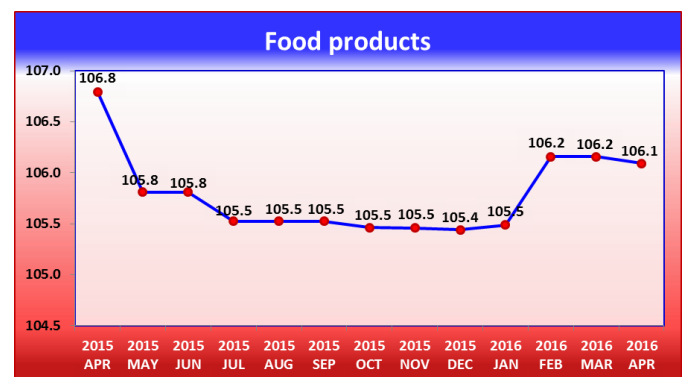
The indices for four industries remained unchanged from March 2016 to April 2016. These industries are: Wearing Apparel; Rubber and Plastics Products; Other Non-metallic Mineral Products and Furniture.

The year-on-year comparison of the PPI registered a decrease of **2.9%**. The main sources of this fall are the indices of Other Non-metallic Mineral Products (**18.3%**) and Fabricated Metal Products, except Machinery and Equipment (**11.5%**). The other indices contributing to the decrease are Rubber and Plastics Products (**9.3%**); Furniture (**7.3%**); Other Manufacturing (**6.9%**); Petroleum and Chemical Products (**1.1%**) and Food Products (**0.7%**). Increases were recorded in the indices for Beverages (**9.2%**); Printing and Reproduction of Recorded Media (**2.5%**) and Wearing Apparel (**1.3%**).

### Performance of selected major industries:

#### Food Production

The index for the Food Production sector recorded a **0.1%** decrease in April 2016 from March 2016.



<sup>1</sup>A detailed methodology on the Producer Price Index is available on our website: [http://www.barstats.gov.bb/files/documents/Producer\\_Price\\_Index\\_Manufacturing\\_Methodology.pdf](http://www.barstats.gov.bb/files/documents/Producer_Price_Index_Manufacturing_Methodology.pdf)

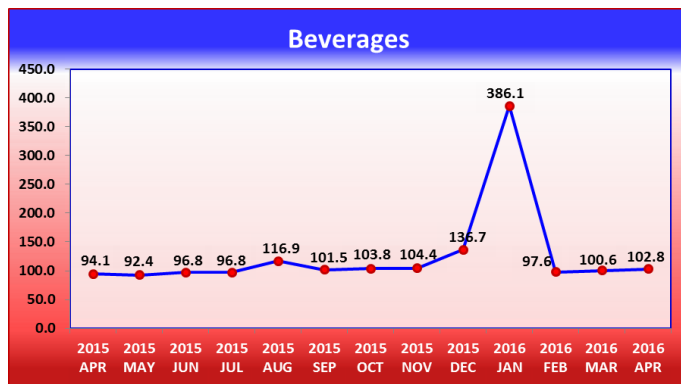
<sup>2</sup>“Other manufacturing industries” in this Index is a combination of ISIC Rev. 4 groups 16, 26 and 27. 16- Manufacture of wood and products of wood and cork, except furniture; manufacture of articles of straw and plaiting materials 26-Manufacture of paper and paper products 27-Manufacture of electrical equipment

This decrease can be attributed to a fall in the sub-group index Processing and preserving of fish, crustaceans and molluscs **(2.7%)**.

The year-on-year index for April 2016 also fell by **0.7%** under the index for March 2016. This decline can be attributed to the sub-group indices for Sugar **(21.9%)** and Prepared animal feeds **(8.2%)**. There were increases in the index of Food Production despite the overall decline; these were in the sub-group indices for Dairy Products **(6.7%)**; Processing and preserving of fish, crustaceans and molluscs **(0.4%)** and Other food products n.e.c. **(0.3%)**.

### Beverages

There was an increase in the Beverages index for April 2016 of **2.2%**. This can be attributed to the sub-group index for Distilling, rectifying and blending of spirits which registered an increase of **4.8%**.

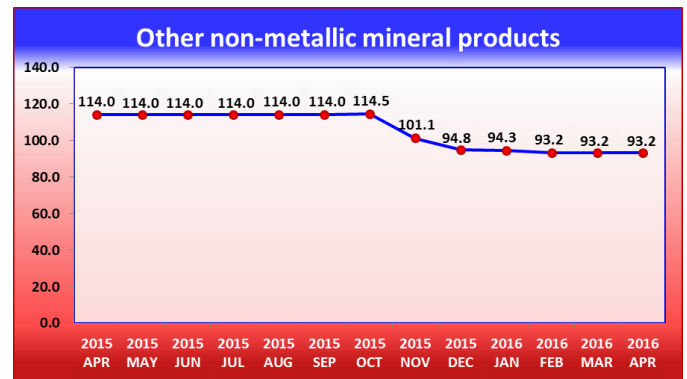


A comparison of the indices for April 2016 and April 2015 showed an increase of **9.2%**. The sub-group indices for Soft drinks: production of mineral waters and other bottled waters **(26.6%)** and Distilling, rectifying and blending of spirits **(4.0%)** contributed to this increase.

### Other Non-Metallic Mineral Products

The index for Other Non-Metallic Mineral Products did not change from March 2016 to April 2016.

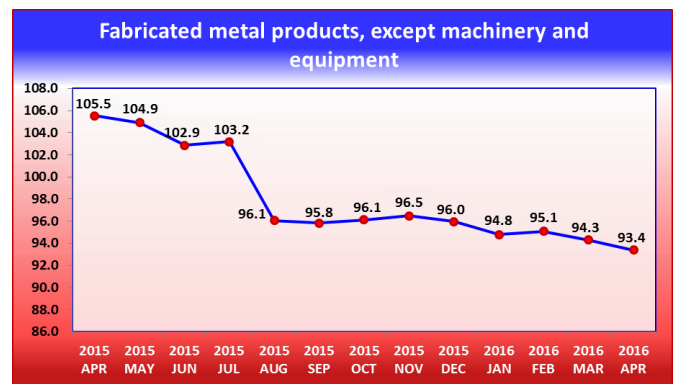
The year-on-year index for April 2016 recorded a decrease of **18.3%**. The main contributors to the decline are the sub-group indices for Cement, lime



and plaster **(37.8%)** and Articles of concrete, cement and plaster **(2.5%)**.

### Fabricated Metal Products, except machinery and equipment

The index of Fabricated Metal Products, except machinery and equipment showed a decrease of **1.0%** in April 2016, when compared to the previous month. This decline is due to a **2.4%** fall in the subgroup index for Forging, pressing, stamping, and roll-forming of metal; powder metallurgy.



The year-on-year index for Fabricated Metal Products, except machinery and equipment recorded a decrease of **11.5%**. The sub-group indices for Forging, pressing, stamping, and roll-forming of metal; powder metallurgy **(15.9%)** and Structural Metal Products **(14.1%)** were the main sources of the decline. An increase was recorded for Other fabricated metal products n.e.c. **(9.9%)**.

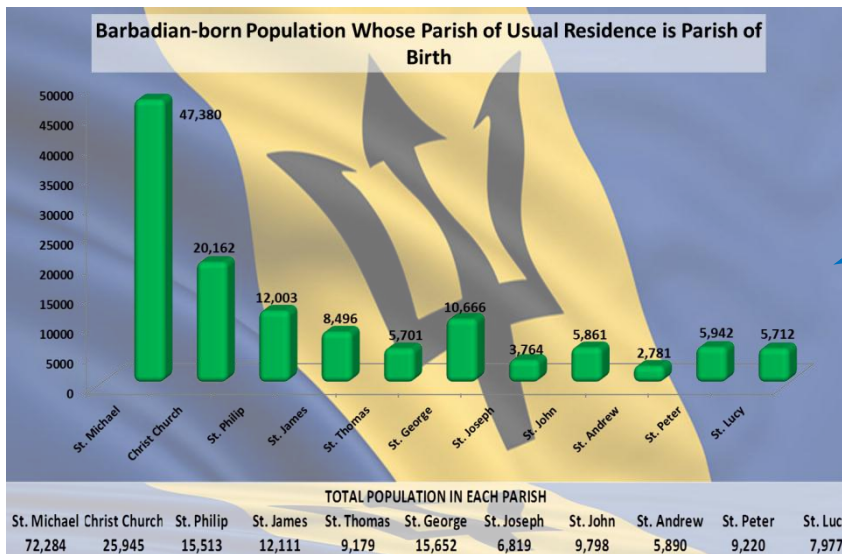
<sup>1</sup>A detailed methodology on the Producer Price Index is available on our website: [http://www.barstats.gov.bb/files/documents/Producer\\_Price\\_Index\\_Manufacturing\\_Methodology.pdf](http://www.barstats.gov.bb/files/documents/Producer_Price_Index_Manufacturing_Methodology.pdf)

<sup>2</sup>“Other manufacturing industries” in this Index is a combination of ISIC Rev. 4 groups 16, 26 and 27. 16- Manufacture of wood and products of wood and cork, except furniture; manufacture of articles of straw and plaiting materials 26-Manufacture of paper and paper products 27-Manufacture of electrical equipment

**PRODUCER PRICE INDEX**  
(May 2011=100)  
April 2016

Table 1A: PPI (Manufacturing) by Industry for the period April 2015 to April 2016.

INDUSTRY	ISIC REV. 4	WEIGHTS	2016 JAN	2016 FEB	2016 MAR	2016 APR	2015 APR	2015 MAY	2015 JUN	2015 JUL	2015 AUG	2015 SEP	2015 OCT	2015 NOV	2015 DEC
Food Products	10	50.1	105.5	106.2	106.2	106.1	106.8	105.8	105.8	105.5	105.5	105.5	105.5	105.5	105.4
Beverages	11	15.1	386.1	97.6	100.6	102.8	94.1	92.4	96.8	96.8	116.9	101.5	103.8	104.4	136.7
Wearing Apparel	14	0.7	110.1	110.1	111.6	111.6	110.1	110.1	110.1	110.1	110.1	110.1	110.1	110.1	110.1
Printing and Reproduction of Recorded Media	18	2.6	109.6	109.6	109.6	112.3	109.6	109.6	109.6	109.6	109.6	109.6	109.6	109.6	109.6
Petroleum and Chemical Products	19,20	5.1	103.3	103.5	101.9	101.3	102.5	103.0	102.3	105.5	105.7	99.7	99.4	98.7	97.8
Rubber and Plastics Products	22	1.5	90.7	90.7	90.7	90.7	100.0	100.0	100.0	100.0	100.0	100.0	90.7	90.7	90.7
Other Non-metallic Mineral Products	23	11.5	94.3	93.2	93.2	93.2	114.0	114.0	114.0	114.0	114.0	114.0	114.5	101.1	94.8
Fabricated Metal Products, except Machinery and Equipment	25	10.0	94.8	95.1	94.3	93.4	105.5	104.9	102.9	103.2	96.1	95.8	96.1	96.5	96.0
Furniture	31	1.7	95.9	95.9	95.9	95.9	103.5	103.5	96.3	96.3	96.3	96.3	96.3	95.9	95.9
Other Manufacturing	16,26,27	1.8	182.8	161.7	99.8	101.0	108.5	109.8	108.9	107.5	116.9	110.0	114.4	108.0	103.8
<b>TOTAL MANUFACTURING</b>	<b>10 - 31</b>	<b>100.0</b>	<b>146.5</b>	<b>102.8</b>	<b>102.0</b>	<b>102.3</b>	<b>105.3</b>	<b>104.6</b>	<b>104.9</b>	<b>104.9</b>	<b>107.4</b>	<b>104.6</b>	<b>104.9</b>	<b>103.4</b>	<b>107.3</b>



**DID YOU KNOW ...?**

**With the exception of one parish, over 50% of the Barbadian born residents in each parish have lived in that parish since birth.**

**Source: Barbados Statistical Service  
Population and Housing Census 2010**

<sup>1</sup>A detailed methodology on the Producer Price Index is available on our website: [http://www.barstats.gov.bb/files/documents/Producer\\_Price\\_Index\\_Manufacturing\\_Methodology.pdf](http://www.barstats.gov.bb/files/documents/Producer_Price_Index_Manufacturing_Methodology.pdf)

<sup>2</sup>“Other manufacturing industries” in this Index is a combination of ISIC Rev. 4 groups 16, 26 and 27. 16- Manufacture of wood and products of wood and cork, except furniture; manufacture of articles of straw and plaiting materials 26-Manufacture of paper and paper products 27-Manufacture of electrical equipment

**PRODUCER PRICE INDEX**  
(May 2011=100)  
April 2016

Table 1B: PPI (Manufacturing) Comparison of April 2016 to March 2016 and April 2015.

INDUSTRY	ISIC REV. 4	WEIGHTS	2016 APR	2016 MAR	CHANGE		2016 APR	2015 APR	CHANGE	
					POINTS	%			POINTS	%
Food Products	10	50.1	106.1	106.2	-0.1	-0.1	106.1	106.8	-0.7	-0.7
Beverages	11	15.1	102.8	100.6	2.2	2.2	102.8	94.1	8.7	9.2
Wearing Apparel	14	0.7	111.6	111.6	0.0	0.0	111.6	110.1	1.4	1.3
Printing and Reproduction of Recorded Media	18	2.6	112.3	109.6	2.8	2.5	112.3	109.6	2.8	2.5
Petroleum and Chemical Products	19,20	5.1	101.3	101.9	-0.7	-0.6	101.3	102.5	-1.2	-1.1
Rubber and Plastics Products	22	1.5	90.7	90.7	0.0	0.0	90.7	100.0	-9.3	-9.3
Other Non-metallic Mineral Products	23	11.5	93.2	93.2	0.0	0.0	93.2	114.0	-20.8	-18.3
Fabricated Metal Products, except Machinery and Furniture	25	10.0	93.4	94.3	-0.9	-1.0	93.4	105.5	-12.1	-11.5
Other Manufacturing	31	1.7	95.9	95.9	0.0	0.0	95.9	103.5	-7.5	-7.3
	16,26,27	1.8	101.0	99.8	1.2	1.2	101.0	108.5	-7.5	-6.9
<b>TOTAL MANUFACTURING</b>	<b>10 - 31</b>	<b>100.0</b>	<b>102.3</b>	<b>102.0</b>	<b>0.3</b>	<b>0.3</b>	<b>102.3</b>	<b>105.3</b>	<b>-3.0</b>	<b>-2.9</b>

*The BSS wishes to  
acknowledge the  
cooperation of the  
business community in  
supplying the required  
data.*

<sup>1</sup>A detailed methodology on the Producer Price Index is available on our website: [http://www.barstats.gov.bb/files/documents/Producer\\_Price\\_Index\\_Manufacturing\\_Methodology.pdf](http://www.barstats.gov.bb/files/documents/Producer_Price_Index_Manufacturing_Methodology.pdf)

<sup>2</sup>“Other manufacturing industries” in this Index is a combination of ISIC Rev. 4 groups 16, 26 and 27. 16- Manufacture of wood and products of wood and cork, except furniture; manufacture of articles of straw and plaiting materials 26-Manufacture of paper and paper products 27-Manufacture of electrical equipment