

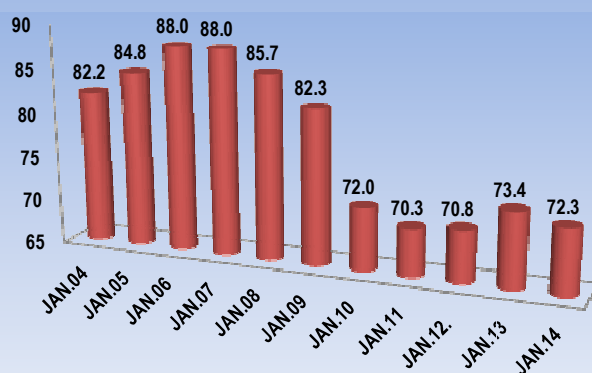
## PROVISIONAL INDEX OF INDUSTRIAL PRODUCTION JANUARY 2014

The Index of Industrial Production (IIP) measures the relative change in the production of Industrial commodities, with respect to a given base year. Therefore the index can be viewed as an economic indicator used to measure a country's manufacturing output over a period of time. The measurement is related to a fixed year, which is referred to as the base-year. The base year is 1994 and can be expressed as 1994=100. The Index of Industrial Production covers the industrial activities of Manufacturing, Mining and Quarrying, and the production of Electricity, Gas and Water. All the Manufacturing sub-sectors operating on the island are represented in the weighting structure of the Index. Indicators are obtained from a selected number of establishments, representative of each industry group.<sup>1</sup>

### SUMMARY

Sector	Jan. 14	Dec. 13	% change over Dec. 13	Jan. 14	% change over Jan. 13
All Industries	72.3	80.5	-10.2	73.4	-1.6
Mining & Quarrying	76.6	56.7	35.1	64.7	18.4
Manufacturing	54.3	64.3	-15.6	56.3	-3.6
Electricity, Gas & Water	152.5	156.9	-2.8	151.8	0.4

All Industries- January 2004-2014



### Performance of Index of Industrial Production

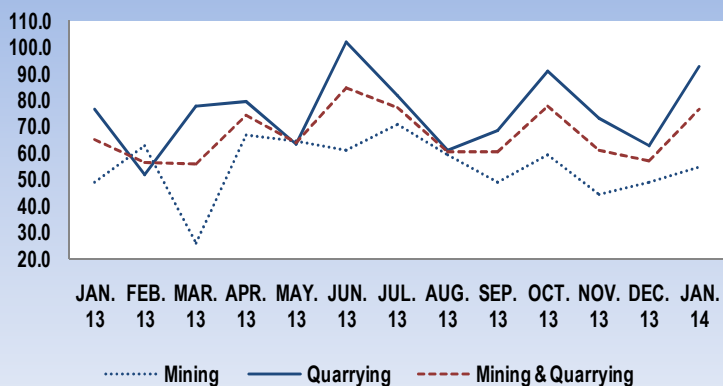
The IIP decreased by **10.2%** in Jan. 2014 compared with the previous month Dec. 2013. This decline in the index was due to a fall off in the consumption of Electricity, Gas and Water (**2.8%**) and Manufacturing (**15.6**). Meanwhile an increase was recorded for Mining & Quarrying (**35.1%**)

The IIP for Jan. 14 fell slightly by **1.6%** as against Jan. 13. This decline was due to a decrease in the manufacturing sector (**3.6%**). However, growth was recorded within sectors of the index for Mining and Quarrying (**18.4%**); and Electricity, Gas & Water (**0.4%**).

<sup>1</sup> A detailed methodology on the Index of Industrial Production is available on our website [http://www.barstats.gov.bb/files/documents/Index\\_of\\_Industrial\\_Production\\_1994\\_Methodology.pdf](http://www.barstats.gov.bb/files/documents/Index_of_Industrial_Production_1994_Methodology.pdf)

<sup>2</sup> Other Manufacturing includes Printing, Textiles, Drapery, Fabricated Metals, Asphalt, Electrical Machinery

### Mining & Quarrying Index



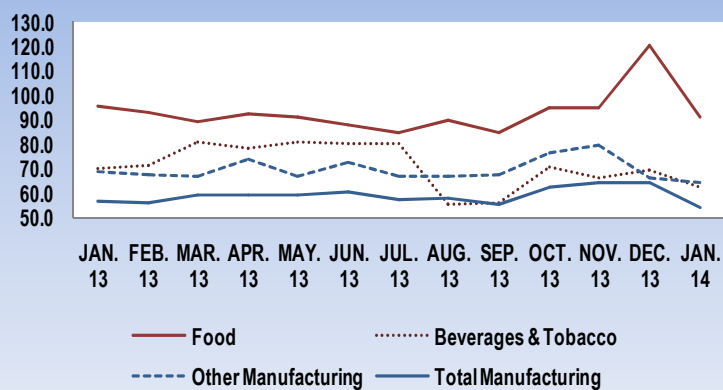
### Performance of Mining & Quarrying

Output for the Mining and Quarrying sector grew by **35.1%** in Jan.14 compared with the previous month Dec.13 due to increases in Stone Quarrying (**11.7%**) and Mining (**48.7%**). Meanwhile year-on-year output for Jan. 14 as against Jan. 13 also showed increased output in Stone Quarrying (**12.5%**) while a decline was recorded in the Index for Mining (**21.1%**).

### Performance of Manufacturing Sector

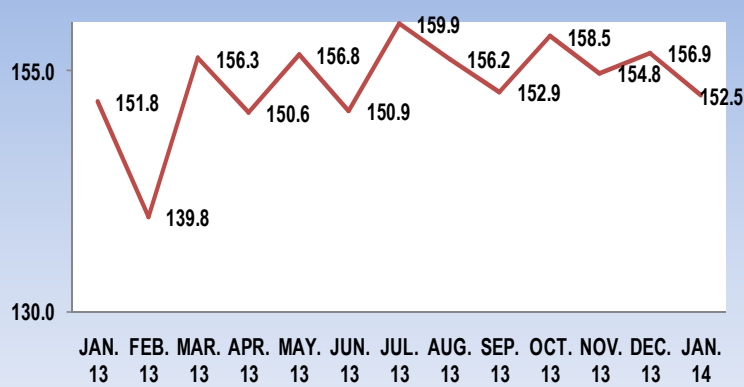
Manufacturing output decreased by **15.6%** in Jan. 14 as compared to Dec. 13. Significant decreases were recorded month-on-month in the indices for Food (**24.6%**); Beverages and Tobacco (**10.1%**); Wearing Apparel (**42.7%**); Wooden Furniture (**13.7%**); Chemicals (**47.0%**); Non-Metallic Mineral Products (**1.4%**) and Other Manufacturing (**3.1%**). The only sub-sector registering output gain was: Electronic Components (**61.6%**), when compared to December of the previous year.

### Manufacturing Index- Major Industries



Meanwhile year-on-year output for Jan. 14 declined by **3.6%** due to decreases in the sub sectors for Food (**4.6%**); Beverages and Tobacco (**11.6%**); Wooden Furniture (**21.0%**) and Other Manufacturing (**6.4%**). Output gains were recorded in the index for Chemicals (**13.9%**); Non-Metallic Mineral Products (**9.7%**); Electronic Components (**43.3%**) and Wearing Apparel (**34.0%**).

### Electricity, Gas & Water



### Performance of Electricity, Gas & Water Sector

This sector recorded a month-on-month decrease of **2.8%** due to declines in the generation of Electricity (**3.4%**); and Water (**0.7%**). However, an increase was recorded in the Index for Natural Gas (**1.4%**). Meanwhile year-on-year output for Jan. 14 showed an increase of **0.4%** as against Jan. 13 due to an increase in Water generation of **8.8%**. Decreases were reflected in the Index for Electricity (**1.7%**) and Natural Gas (**7.5%**).

<sup>1</sup> A detailed methodology on the Index of Industrial Production is available on our website [http://www.barstats.gov.bb/files/documents/Index\\_of\\_Industrial\\_Production\\_1994\\_Methodology.pdf](http://www.barstats.gov.bb/files/documents/Index_of_Industrial_Production_1994_Methodology.pdf)

<sup>2</sup> Other Manufacturing includes Printing, Textiles, Drapery, Fabricated Metals, Asphalt, Electrical Machinery

**INDEX OF INDUSTRIAL PRODUCTION**  
(1994=100)  
January-2014

TABLE 1A

INDUSTRY	ISIC Code	2014 JAN.	2013 JAN.	2013 FEB.	2013 MAR.	2013 APR.	2013 MAY.	2013 JUN.	2013 JUL.	2013 AUG.	2013 SEP.	2013 OCT.	2013 NOV.	2013 DEC.	2013 ANNUAL INDEX
Mining	220	54.6	48.5	62.7	26.0	66.7	64.2	61.1	70.5	59.4	48.8	59.1	43.9	48.9	55.0
Quarrying	290	92.8	76.6	51.8	77.7	79.3	63.1	101.9	81.4	61.0	68.4	90.7	72.8	62.4	73.9
<b>Mining &amp; Quarrying</b>	<b>DIV. 2</b>	<b>76.6</b>	<b>64.7</b>	<b>56.4</b>	<b>55.9</b>	<b>74.0</b>	<b>63.5</b>	<b>84.6</b>	<b>76.8</b>	<b>60.3</b>	<b>60.1</b>	<b>77.3</b>	<b>60.6</b>	<b>56.7</b>	<b>65.9</b>
Food	311/312	90.8	95.2	93.2	89.3	92.3	90.7	87.9	84.4	89.5	84.5	94.8	95.0	120.4	93.1
Beverages & Tobacco	313/314	62.1	70.2	71.3	80.7	78.3	80.5	80.3	80.2	55.4	56.2	70.3	66.3	69.0	71.6
Wearing Apparel	322	4.1	3.0	6.0	11.3	5.2	10.9	9.0	9.1	5.9	6.1	6.7	5.2	7.1	7.1
Wooden Furniture	332	107.0	135.4	103.0	70.7	109.2	99.4	107.3	140.5	104.0	107.8	124.6	131.3	123.9	113.1
Chemicals	351/352	74.5	65.4	62.5	73.8	70.7	84.1	79.1	90.1	145.6	151.4	150.1	188.3	140.5	108.5
Petroleum Products	353	0.0	0.0	0.0	0.0	0.0	0.0	0.0	0.0	0.0	0.0	0.0	0.0	0.0	0.0
Non-metallic Mineral Products	369	190.9	174.0	189.8	250.4	198.1	217.0	224.1	189.5	220.8	150.3	181.8	194.0	193.5	198.1
Electronic Components	383	18.0	12.5	16.3	19.0	14.6	14.3	19.1	9.4	13.1	25.1	17.6	13.4	11.1	15.5
Other Manufacturing <sup>2</sup>	3***	64.1	68.5	67.6	66.5	73.6	66.5	72.8	67.1	66.4	67.3	76.2	79.3	66.2	69.8
<b>Manufacturing</b>	<b>DIV. 3</b>	<b>54.3</b>	<b>56.3</b>	<b>56.1</b>	<b>59.3</b>	<b>59.0</b>	<b>58.8</b>	<b>60.1</b>	<b>57.3</b>	<b>57.8</b>	<b>55.1</b>	<b>62.1</b>	<b>64.4</b>	<b>64.3</b>	<b>59.2</b>
Electricity, Water & Gas	DIV. 4	152.5	151.8	139.8	156.3	150.6	156.8	150.9	159.9	156.2	152.9	158.5	154.8	156.9	153.8
<b>All Industries</b>	<b>DIV. 2+3+4</b>	<b>72.3</b>	<b>73.4</b>	<b>70.9</b>	<b>76.4</b>	<b>75.6</b>	<b>76.3</b>	<b>76.8</b>	<b>76.0</b>	<b>75.3</b>	<b>72.5</b>	<b>79.6</b>	<b>80.3<sup>R</sup></b>	<b>80.5<sup>R</sup></b>	<b>76.1</b>

R – Revised

<sup>1</sup> A detailed methodology on the Index of Industrial Production is available on our website  
[http://www.barstats.gov.bb/files/documents/Index\\_of\\_Industrial\\_Production\\_1994\\_Methodology.pdf](http://www.barstats.gov.bb/files/documents/Index_of_Industrial_Production_1994_Methodology.pdf)

<sup>2</sup> Other Manufacturing includes Printing, Textiles, Drapery, Fabricated Metals, Asphalt, Electrical Machinery

## INDEX OF INDUSTRIAL PRODUCTION

(1994=100)  
January-2014

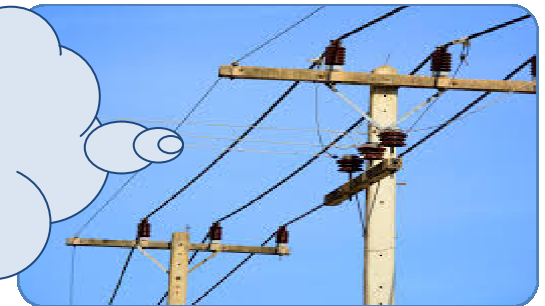
TABLE 1B

INDUSTRY	VALUE ADDED WEIGHTS	2014	2013	CHANGE OVER JAN		2014	2013	CHANGE OVER JAN	
		JAN	DEC	POINTS	%	JAN	JAN	POINTS	%
Mining	11	54.6	48.9	5.7	11.7	54.6	48.5	6.1	12.5
Quarrying	15	92.8	62.4	30.4	48.7	92.8	76.6	16.1	21.1
<b>Mining &amp; Quarrying</b>	<b>26</b>	<b>76.6</b>	<b>56.7</b>	<b>19.9</b>	<b>35.1</b>	<b>76.6</b>	<b>64.7</b>	<b>11.9</b>	<b>18.4</b>
Food	148	90.8	120.4	-29.6	-24.6	90.8	95.2	-4.4	-4.6
Beverages & Tobacco	113	62.1	69.0	-6.9	-10.1	62.1	70.2	-8.1	-11.6
Wearing Apparel	21	4.1	7.1	-3.0	-42.7	4.1	3.0	1.0	34.0
Wooden Furniture	16	107.0	123.9	-17.0	-13.7	107.0	135.4	-28.4	-21.0
Chemicals	35	74.5	140.5	-66.0	-47.0	74.5	65.4	9.1	13.9
Petroleum Products	214	0.0	0.0	0.0	0.0	0.0	0.0	0.0	0.0
Non-metalic Mineral Products	35	190.9	193.5	-2.6	-1.4	190.9	174.0	16.9	9.7
Electronic Components	44	18.0	11.1	6.8	61.6	18.0	12.5	5.4	43.3
Other Manufacturing	170	64.1	66.2	-2.1	-3.1	64.1	68.5	-4.4	-6.4
<b>Manufacturing</b>	<b>797</b>	<b>54.3</b>	<b>64.3</b>	<b>-10.0</b>	<b>-15.6</b>	<b>54.3</b>	<b>56.3</b>	<b>-2.0</b>	<b>-3.6</b>
<b>Electricity, Water &amp; Gas</b>	<b>177</b>	<b>152.5</b>	<b>156.9</b>	<b>-4.4</b>	<b>-2.8</b>	<b>152.5</b>	<b>151.8</b>	<b>0.6</b>	<b>0.4</b>
<b>All Industries</b>	<b>1000</b>	<b>72.3</b>	<b>80.5</b>	<b>-8.2</b>	<b>-10.2</b>	<b>72.3</b>	<b>73.4</b>	<b>-1.2</b>	<b>-1.6</b>

*The BSS wishes to acknowledge the cooperation of the business community in supplying the required data.*

**Did you know?**

970 million Kwh of electricity was generated in 2013.



<sup>1</sup> A detailed methodology on the Index of Industrial Production is available on our website [http://www.barstats.gov.bb/files/documents/Index\\_of\\_Industrial\\_Production\\_1994\\_Methodology.pdf](http://www.barstats.gov.bb/files/documents/Index_of_Industrial_Production_1994_Methodology.pdf)

<sup>2</sup> Other Manufacturing includes Printing, Textiles, Drapery, Fabricated Metals, Asphalt, Electrical Machinery